



THE AFFORDABLE VACATION HOME

The Yarmouth Resort Condo Hotel offers a great opportunity to Purchase a condominium in one of the best locations on Cape Cod Within walking distance to Sparkling Nantucket Sound





Each 400 sq. ft. condo unit consists of a totally refurbished room with a brand new kitchenette with a beautiful full bath, and a patio (on first floor units) and a deck (on second story units)

At the Yarmouth Resort, you can use your condominium second home, summer, winter, spring or fall and our management team will manage your condominium rental if you should choose to rent it out on the days that you are not using it.



WEST YARMOUTH Yarmouth Resort

Our newly renovated Resort offers fabulous amenities, such as: indoor and outdoor pools, fitness center, game room, whirlpool & sauna.

The Resort is conveniently located just minutes away from sandy Cape Cod beaches, golf, restaurants, shops and many other attractions.





WEST YARMOUTH
Yarmouth Resort

The logo features a stylized bridge structure in grey with a yellow sun in the center. Below the bridge is a black banner with the text 'WEST YARMOUTH' in white. Underneath the banner, the words 'Yarmouth Resort' are written in a large, bold, orange, textured font.

Rooms can be customized to suite your individual tastes and requirements.



Units are currently being sold at deeply discounted prices for a limited time period.

Excellent Financing available



Frequently Asked Questions

What is a condo hotel?

It is a hassle – free vacation home that can generate income and offset costs. By allowing management to rent out the unit when you are not using it you can receive a portion of the revenue.

What is the difference between a condo hotel and a time-share?

By owning a unit in a condo hotel you are allowed to use the unit and the amenities **year round**. House keeping, maintenance issues and inspections are all handled by a professional management team. With time share, you own a very small percentage of the entire property with a right to use it for a short, pre-determined time.

Can I use the unit whenever I want?

Yes – You can use the room as a vacation or second home anytime you care to, so long as it is not used as a primary residence

How many can stay in a room at one time?

By law, no more than 4 people can stay in a room. In a suite 6 are allowed.



Frequently Asked Questions

What is the Condo fee.

The condo fee for the majority of the units is \$175.00, which includes all utilities.

What are the annual taxes on the units?

Taxes for the majority of units is *under \$268.00 per year*

How does the management make sure that all rooms are rented out evenly?



Frequently Asked Questions

Can I make improvements to my unit?

Yes – you own the unit, you are free to decorate it as you would like. If there are any structural, electrical, or plumbing upgrades, you will need permission from the trustees as well as the Town of Yarmouth to begin work.

Can I buy two (2) rooms side by side and put in a door to connect them?

Yes.

Can my family members use it at no cost?

Yes. However if you are part of the Yarmouth Resort Rental Management Program you will be required to pay a \$25 cleaning fee on the last day of their stay.



Frequently Asked Questions

Is there a laundry room?

We are planning to install 2 washers and 2 dryers on the first floor. There are several Laundromats in the local area. Unfortunately, too many machines would overload our septic system.

Are meals served?

The hotel does not offer meals at this time.

Are pets allowed?

Only owners are allowed to have pets.

Will there be smoking rooms?

Only in designated rooms as determined by the owner.

Can I sell my own unit?

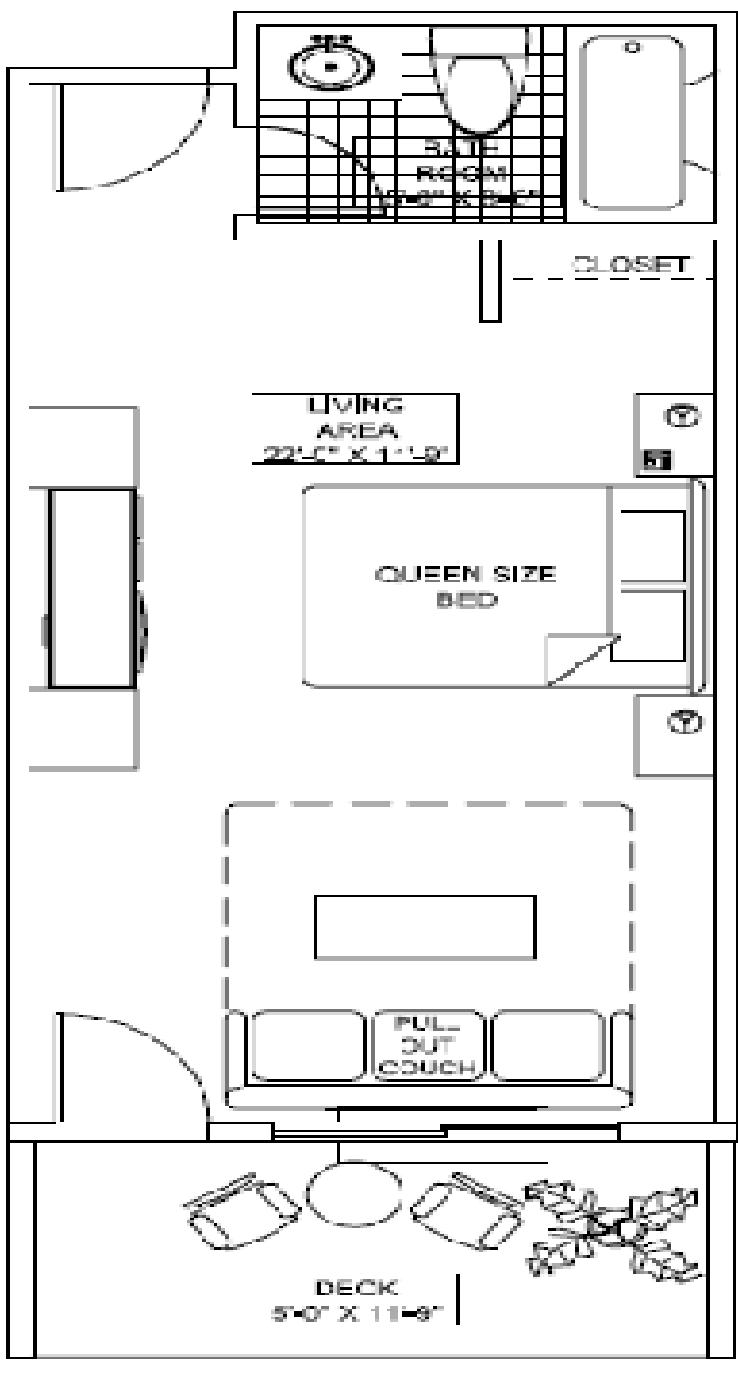
Yes.

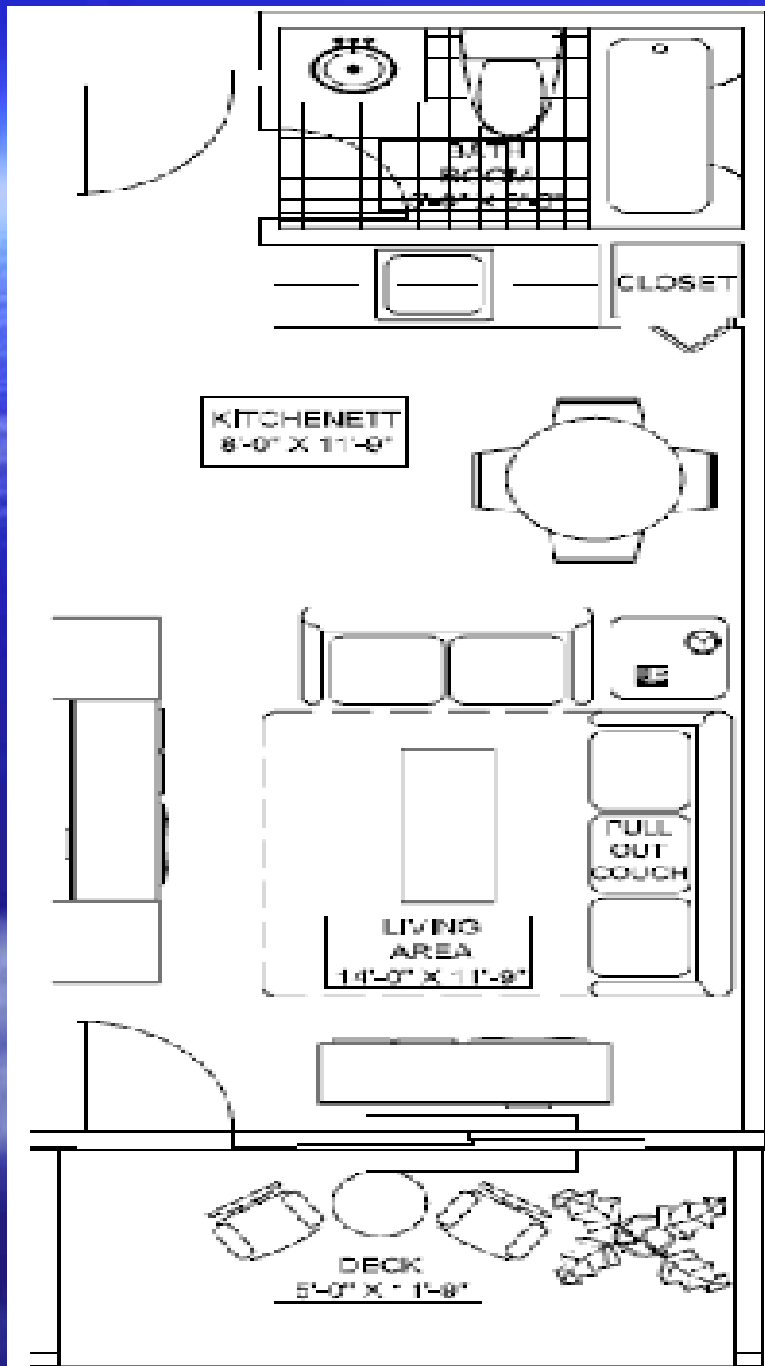


Studio Unit

400 S.F

The developer reserves the right to make any modifications that he deems necessary. All dimensions and areas shown on these plans are approximate. "As Built" dimensions and areas may vary from those shown. The areas shown are based on standard architectural calculation.

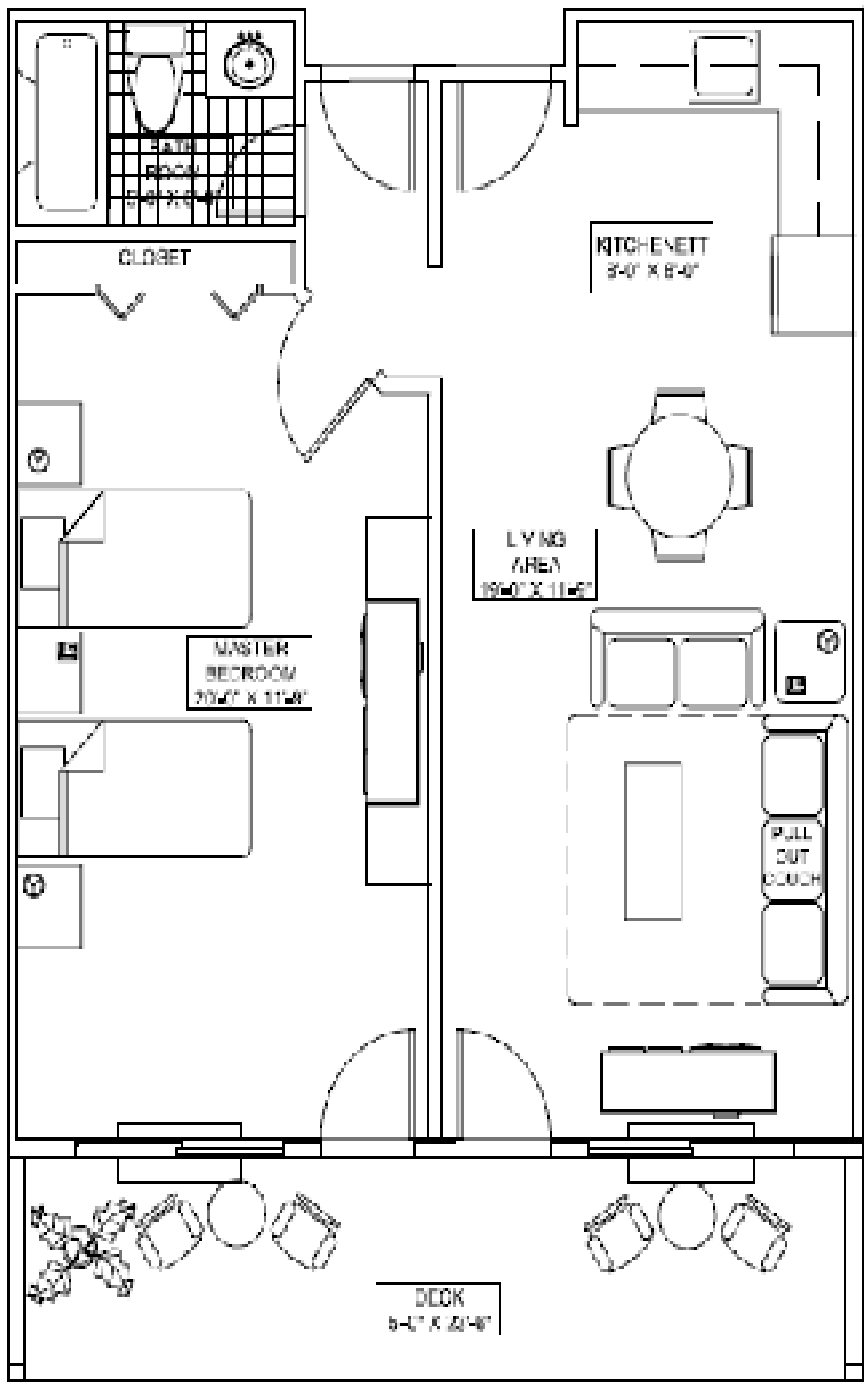




Studio Unit

400 sq. ft.

The developer reserves the right to make any modifications that he deems necessary. All dimensions and areas shown on these plans are approximate. "As Built" dimensions and areas may vary from those shown. The areas shown are based on standard architectural calculation.

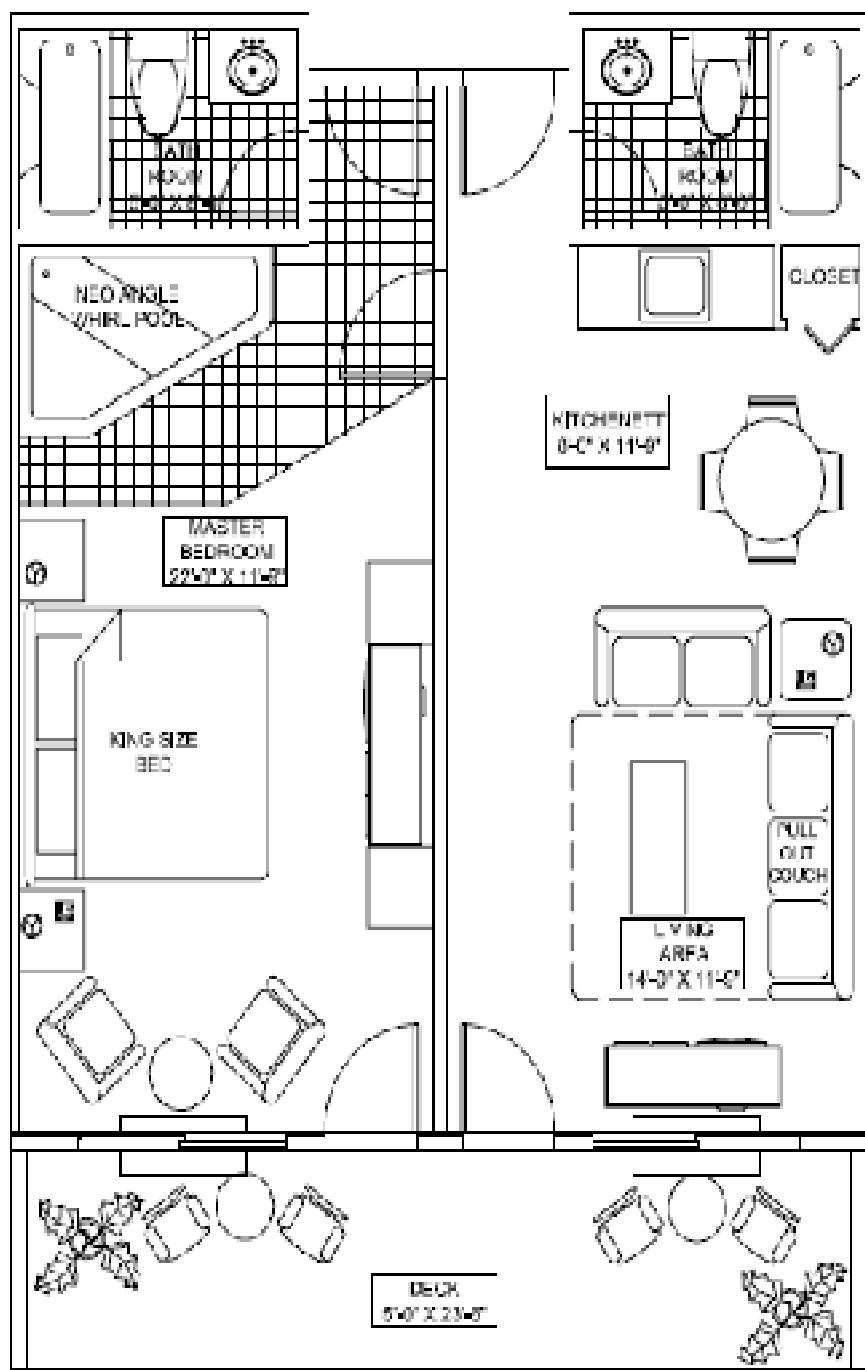


1- Bedroom Unit 800 S.F

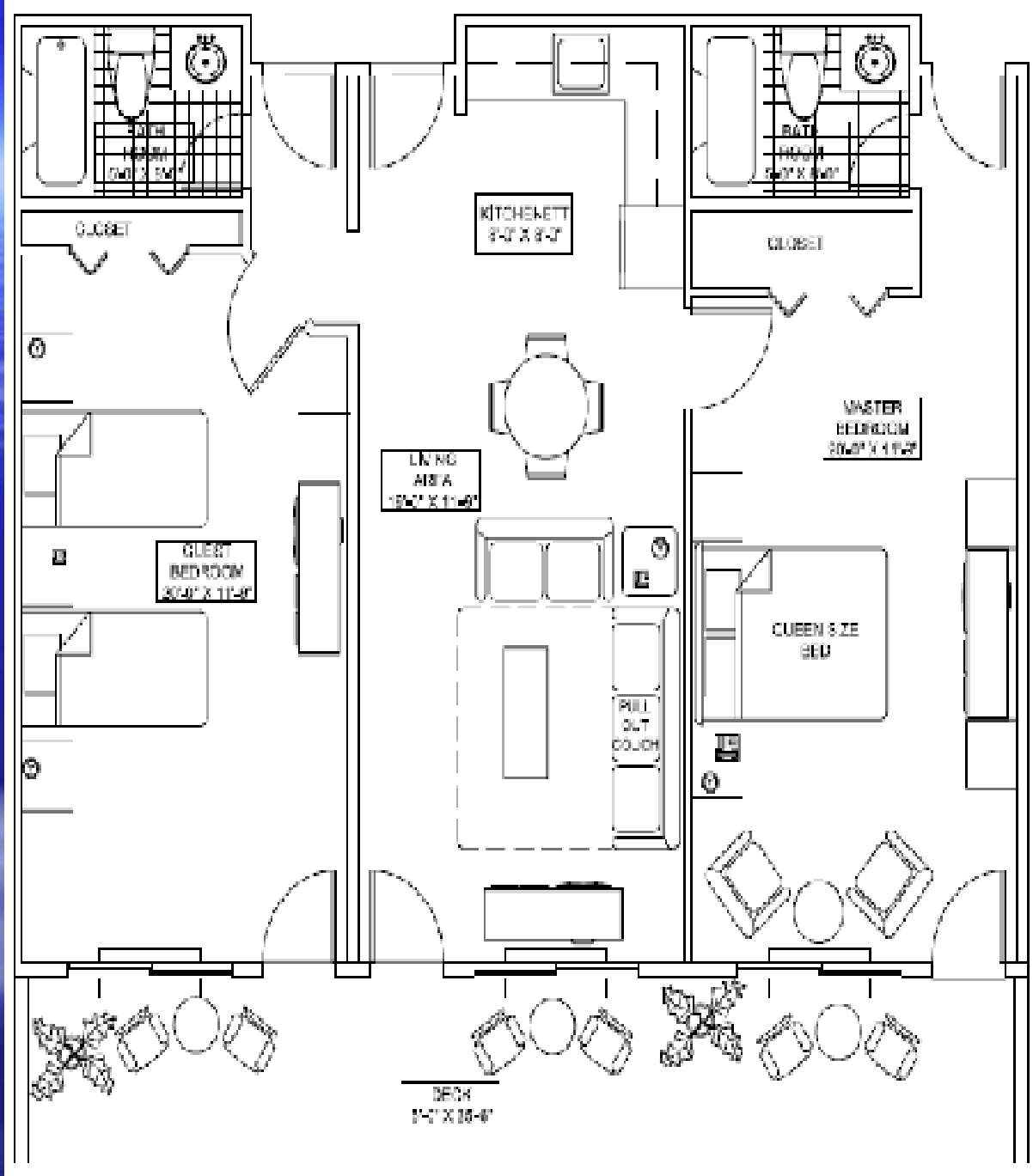
The developer reserves the right to make any modifications that he deems necessary. All dimensions and areas shown on these plans are approximate. "As Built" dimensions and areas may vary from those shown. The areas shown are based on standard architectural calculation.



1- Bedroom Unit 800 S.F



The developer reserves the right to make any modifications that he deems necessary. All dimensions and areas shown on these plans are approximate. "As Built" dimensions and areas may vary from those shown. The areas shown are based on standard architectural calculation.



2- Bedroom Unit 1200 S.F

The developer reserves the right to make any modifications that he deems necessary. All dimensions and areas shown on these plans are approximate. "As Built" dimensions and areas may vary from those shown. The areas shown are based on standard architectural calculation.